

## Chapman River Cellar Door - Antechamber Bay, Kangaroo Island

Open 11-4.30 Thursdays to Mondays (Closed Wednesdays-Thursdays: Winter closure July-August) p: 08 8553 1371 e: [chapmanriverwines@activ8.net.au](mailto:chapmanriverwines@activ8.net.au)

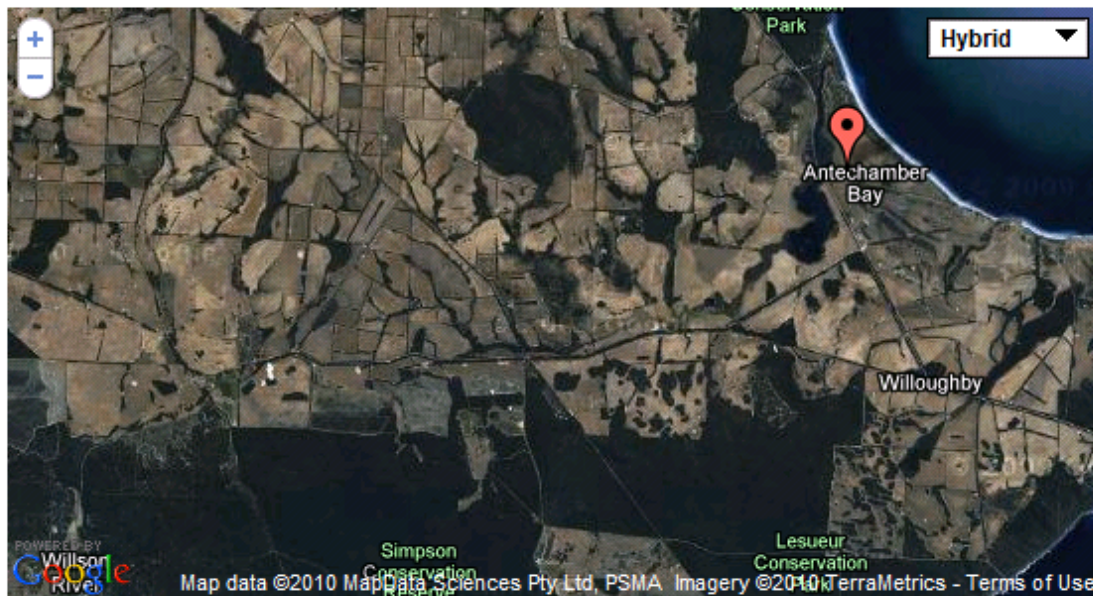


An aircraft hanger (a tin shed basically!) built by the Lashmar family and situated behind a stand of trees, next to the airstrip (North/South 800 metres, Flyers welcome) was just right for conversion to the Cellar Door.

Class C starts at 8500' and the shortest crossing is only 20KM, so even OCTA you can stay within gliding distance and no life jackets required.

### Airstrip:

About 800m grass, regularly used by especially Aldinga-based people. The strip is roughly 16/34 has a powerline at the Southern end and some small trees at the Northern end. The windsock is at the South Eastern end. S035 47.7 E138 04.1.



More details available at

<http://www.goodfoodkangaroosland.com/wine/chapmanriverwines.asp>