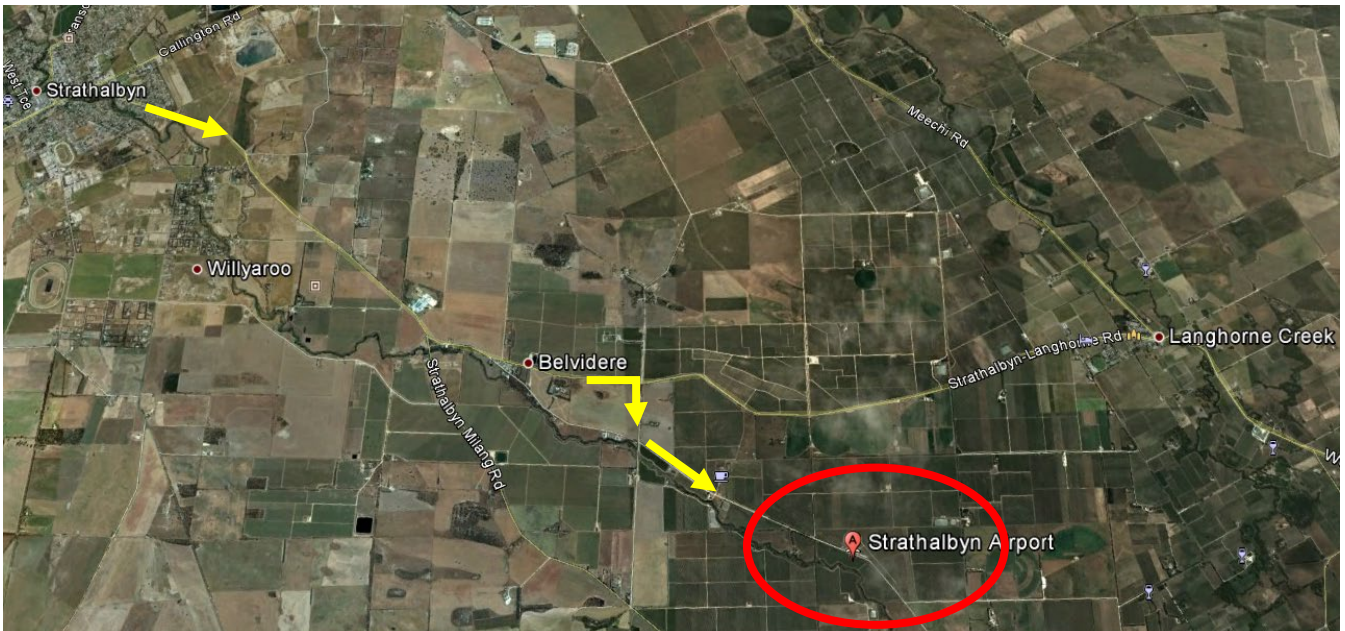


**How to find us:**

We are located at the Strathalbyn Airfield (YSYN), 479 Angas Plains Road, Langhorne Creek; 10 minutes out of the Strathalbyn township heading toward Langhorne Creek and the Angas Plains Winery. No matter whether you are coming from Adelaide, Murray Bridge, Victor Harbor or anywhere in between, it's very easy to find us.



Coming from Adelaide/Mt Barker, as you approach the Strathalbyn township, take the B37 Langhorne Ck, Victor Harbor exit.

At the roundabout continue straight ahead. Follow the **B45 Langhorne Ck, Wellington Rd.**

Continue on B45 until you reach **Belvidere** then lookout for the airstrip sign on the LHS of the road and **Cheriton Road** on the right.



Turn right into **Cheriton Road**, then left into **Angas Plains Rd.** Travel for approx 2.5 kms and look for the airfield entrance and our sign on the LHS.



Drive in and as you travel along the road you will see the flight office. Park your car, come and join us and be prepared to have fun!

**PLEASE NOTE:** As you are near an active airfield, please watch out for moving aircraft - **ALL CHILDREN must be supervised and accompanied by an adult at all times.**